



Project:	Type:	QTY:
Product Code:		

Ø3"



## Product Code

IP54 - RCL3 - RTF -	INTENSITY	-	VOLTAGE	-	OPTION
	WW27 =2700K CCT, 550 lm		120 =120V		125TCA=1.25" thick ceiling adaptor
	<b>WW30*</b> =3000K CCT, 555 lm		UNV2=277/347V		
	WW35 =3500K CCT, 570 lm				
	NW =4100K CCT, 590 lm				
	BW =5500K CCT, 610 lm				

Note: \* Components usually in stock for quick assembly and shipping.

## Features + Specifications

### Intended Use:

- Building interior/exterior
- Ø3" Ceiling recessed mount
- Low profile design for existing ceiling use
- Ideal for Residential + Light commercial use
- Wet location listed

### Construction:

- Die cast aluminum one piece trim/reflector
- Trim powder coat painted low gloss white
- Low profile clear specular reflector ring
- PMMA frosted opal lens

### Optical System:

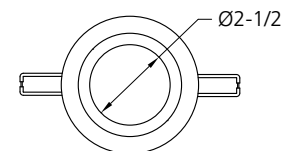
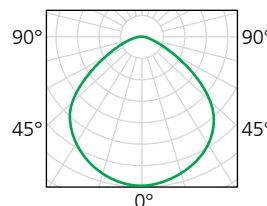
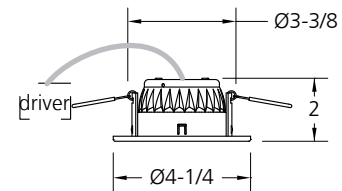
- High brightness Samsung LM561B SMDs with LM80 certificate **5W** >110 lm / LED watt
- **\*WW30 = 3000K CCT, 555 lumens** minimum with 80+ CRI
- Optional CCT color WW27, WW35, NW & BW also available (These CCT might require minimum quantities with longer lead time)
- Laminated aluminum PCB for effective heat management
- PMMA frosted opal lens with specular cone for glare control
- 120° symmetrical light distribution
- Ideal for general lighting application
- Fits up to 3/4" thick ceiling materials
- Optional factory installed 1-1/4" thick ceiling adaptor

### Electrical System:

- Constant current driver technology
- HPF and High Efficiency circuitry
- RoHS compliant
- Short circuit and Overheat protected
- 120V Line voltage dimmable
- Recessed housing "feed-thru wiring" rated

### Mounting:

- Ideal for retrofit application into existing ceiling



Certified to CSA C22.2 No.250.0 Conformed to UL 1598

Certification Marks (where applicable) will be found on our luminaires and its components



www.iplighting.com

Light of Your World



Right reserved for material and spec. modification without prior notice.

Datecode 20150130

Warranty - Up To 5 Years